

# Movers and Shakers

## Dawson's model

A person is historically significant if their actions match most of these statements:

- They made big changes in their lifetime.
- They made a lot of people's lives better or worse.
- They changed the way people think.
- Their ideas are still used today.
- They were a very good or very bad role model.

## Categories of significant people

Significant people can be sorted into groups by what they did.

- An **activist** is a person who feels strongly about helping people, other living things or the planet. They protest to make changes happen.
- An **explorer** is a person who travels to places to find out what is there.
- A **scientist** is a person who discovers or invents new things.
- An **artist** is a person who creates works of art, including pieces of music, plays, poems, paintings, dances or sculptures.
- A **monarch** is a king or queen who rules a kingdom.

## Examples of significant people

There have been many significant people throughout history. These are some examples.



**Mary Anning** studied fossils and shared her knowledge.



**Paul Cézanne** helped to create a new style of art called Cubism.



**Emmeline Pankhurst** stood up for women's rights.



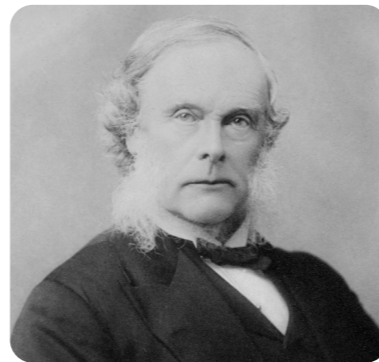
**Neil Armstrong** was the first person to walk on the Moon.



**Henry VIII** was the king who formed the Church of England.



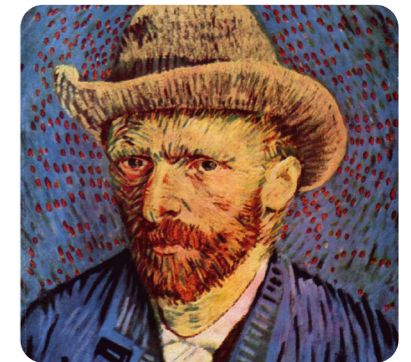
**Rosa Parks** wanted black people to have the same rights as white people.



**Joseph Lister** found out that dirty conditions in hospitals caused infections.



**Christopher Columbus** was the first European person to discover the Americas.

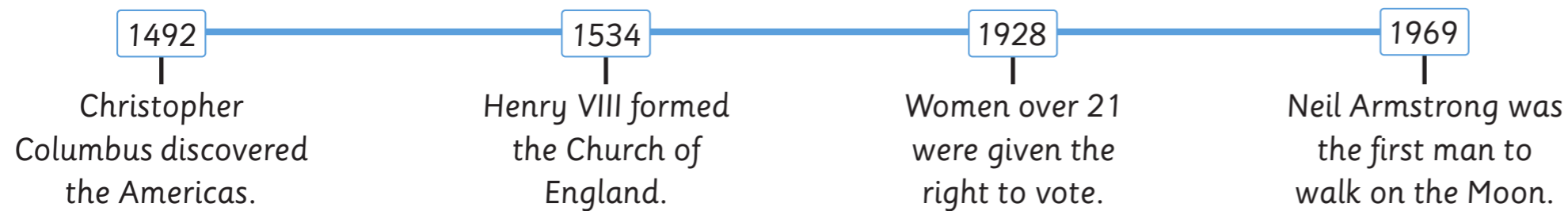


**Vincent van Gogh** created a new style of painting.



# Timelines

A timeline can be used to put important dates and events in chronological order. The numbers are dates that tell you when an event happened.



## Significant people of today

Significant people are still making big changes in the world today.



**Malala Yousafzai** campaigns for girls to have the right to go to school.



**Greta Thunberg** campaigns to stop climate change.



**Elon Musk** is trying to make a rocket to go to Mars.



**JK Rowling** wrote the Harry Potter books.

## Memorials

A memorial is made to remind people of a significant person or event. Memorials can include statues, monuments, plaques and stamps.



Statue of Emmeline Pankhurst



Monument to Captain James Cook



Plaque for Mary Anning



Stamp of Mahatma Gandhi

# Time words

There are many useful words that help us talk about time.

- A **year** is 365 days.
- A **decade** is 10 years.
- A **century** is 100 years.

## Glossary

<b>discover</b>	To see or find something before anyone else.
<b>invent</b>	To design or make something that has never been made before.
<b>monument</b>	A structure built to remember an event or person.
<b>plaque</b>	A flat piece of metal or stone with writing on it.
<b>protest</b>	An event where people come together to show that they are unhappy about something.
<b>significant</b>	Something that is important.
<b>statue</b>	An object usually made from stone or metal to look like a person.

